



**AZ CUP 2025**



# SELFBRIEFING

17.4.–26.4. 2025



NÁRODNÍ  
SPORTOVNÍ  
AGENTURA



# AIRPORT INFO



Elevation: 493m / 1617ft.

RWY: 150°/330° (780x150 m, grass)

Airport frequency (FREQ): 126,630

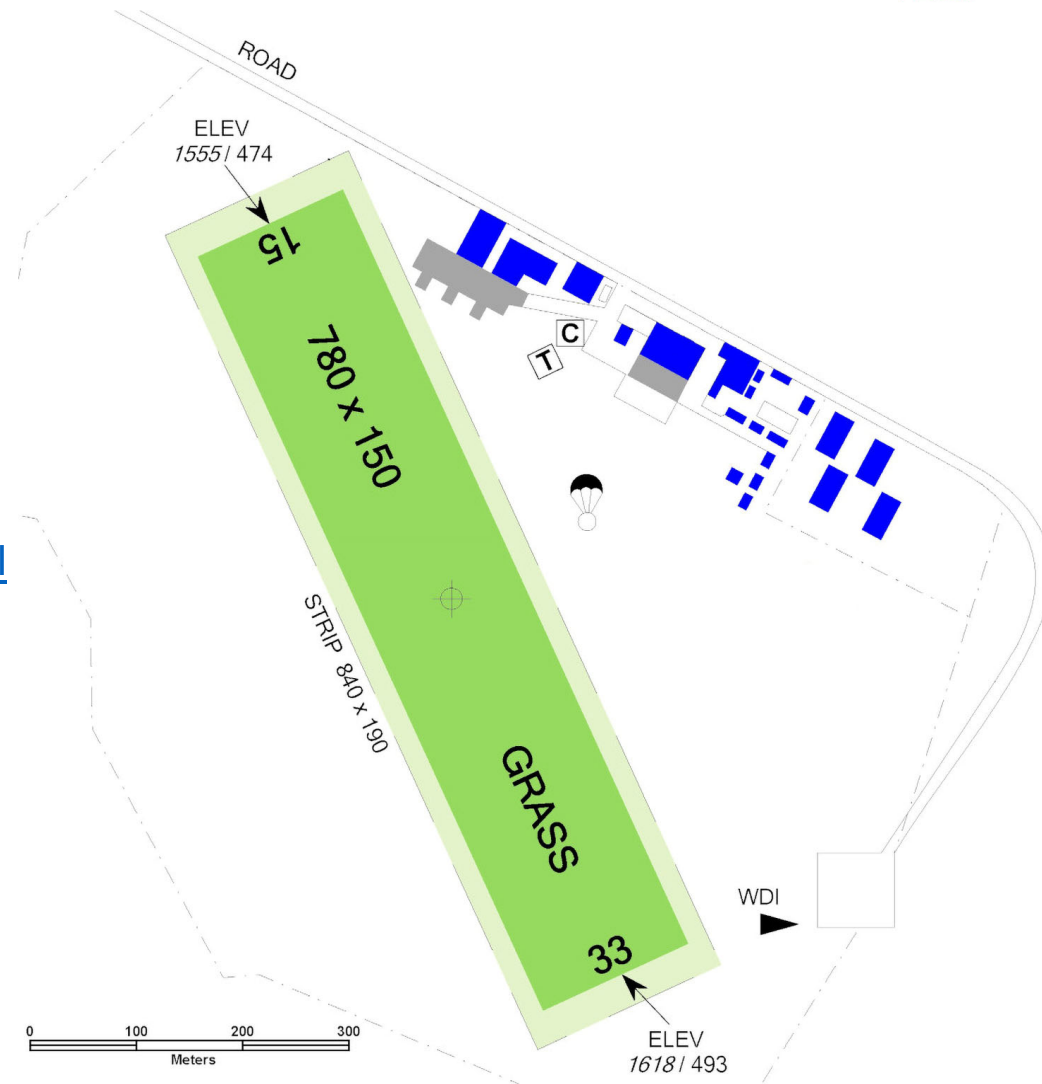
VFR Manual:

[https://aim.rlp.cz/vfrmanual/actual/lkzb\\_text\\_en.html](https://aim.rlp.cz/vfrmanual/actual/lkzb_text_en.html)

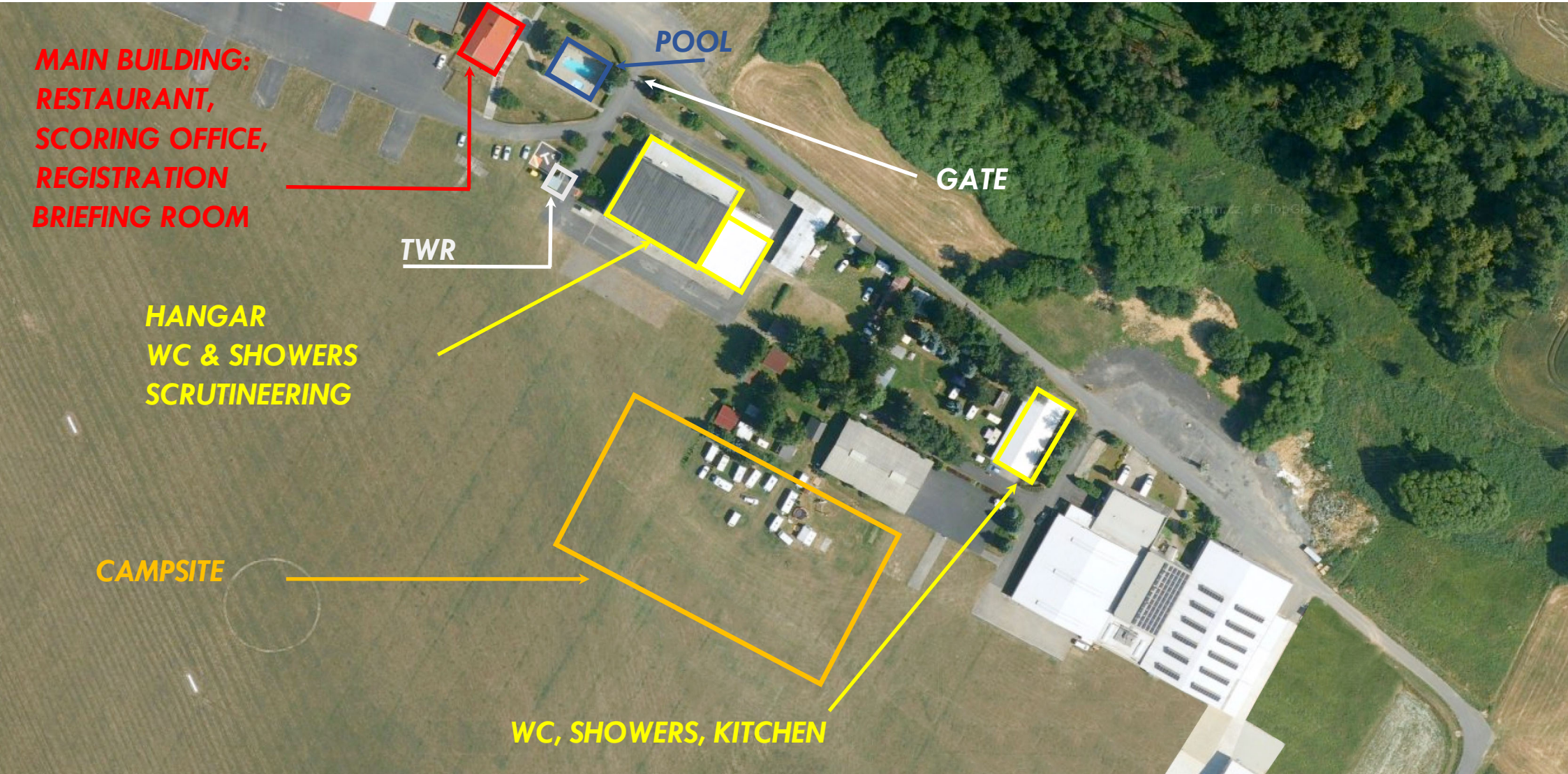
Gliding Circuit:

RWY 15 – right

RWY 33 - left



# AIRFIELD FACILITIES



**MAIN BUILDING:  
RESTAURANT,  
SCORING OFFICE,  
REGISTRATION  
BRIEFING ROOM**

**POOL**

**GATE**

**TWR**

**HANGAR  
WC & SHOWERS  
SCRUTINEERING**

**CAMPSITE**

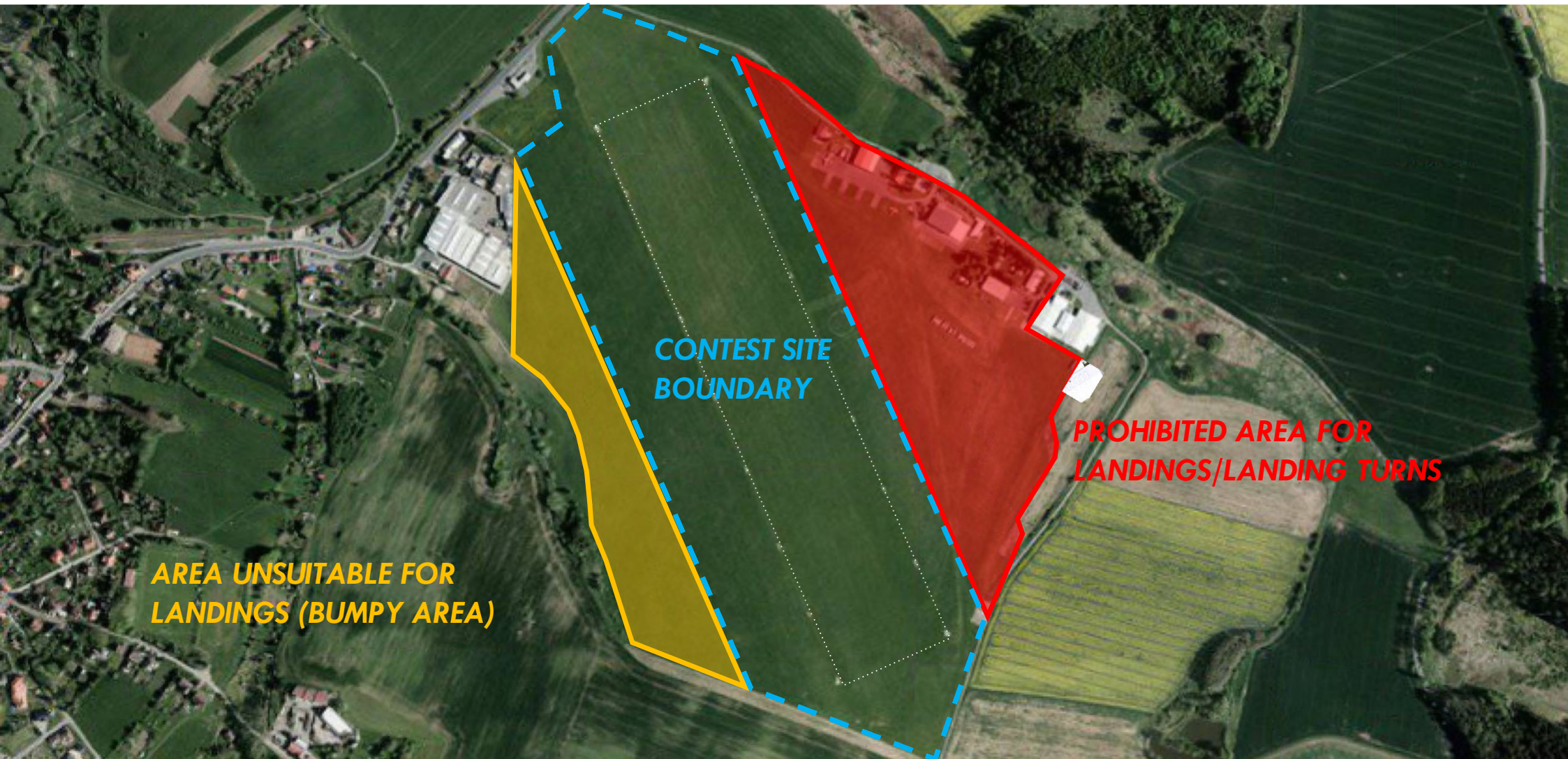
**WC, SHOWERS, KITCHEN**

# GLIDER TIE-DOWN AREA



- RWY safety zone
- no parking area
- tow planes landing strip
- glider landing strip - during takeoffs
- camp
- watter filling from tank
- watter filling spot
- gliders tie-down borders
- access road

# CONTEST SITE BOUNDARIES



Contest area will be specified before the official start of the competition according to actual ICAO situation in Czechia, Germany and Austria.

# DAILY BRIEFINGS, INFORMATION CHANNELS



During the competition all necessary information (such as RWY in use, airspace information, etc.) will be announced during daily briefings. If not stated otherwise, daily briefings will be held at 10:00 in the briefing room every day.

Official information channels will be following WhatsApp groups:

AZ CUP25 – Official (one-way)

AZ CUP25 – Unofficial (two-ways)

All competition day information will be published on the task sheets.

# GRIDDING RWY 15

*Classes will be gridded separately.  
Each class will have specific time slot for gridding  
announced in the morning.*

FREE grid order will be applied for the whole competition period.

All cars must be removed from the grid 15 minutes before the first launch.

## **CLUB & 15M MIXED CLASS**

– 5-6 gliders in a row

## **OPEN MIXED CLASS**

– 4-5 gliders in a row

*Drive in from the front! While queueing our grid crew will tell you where to go.*

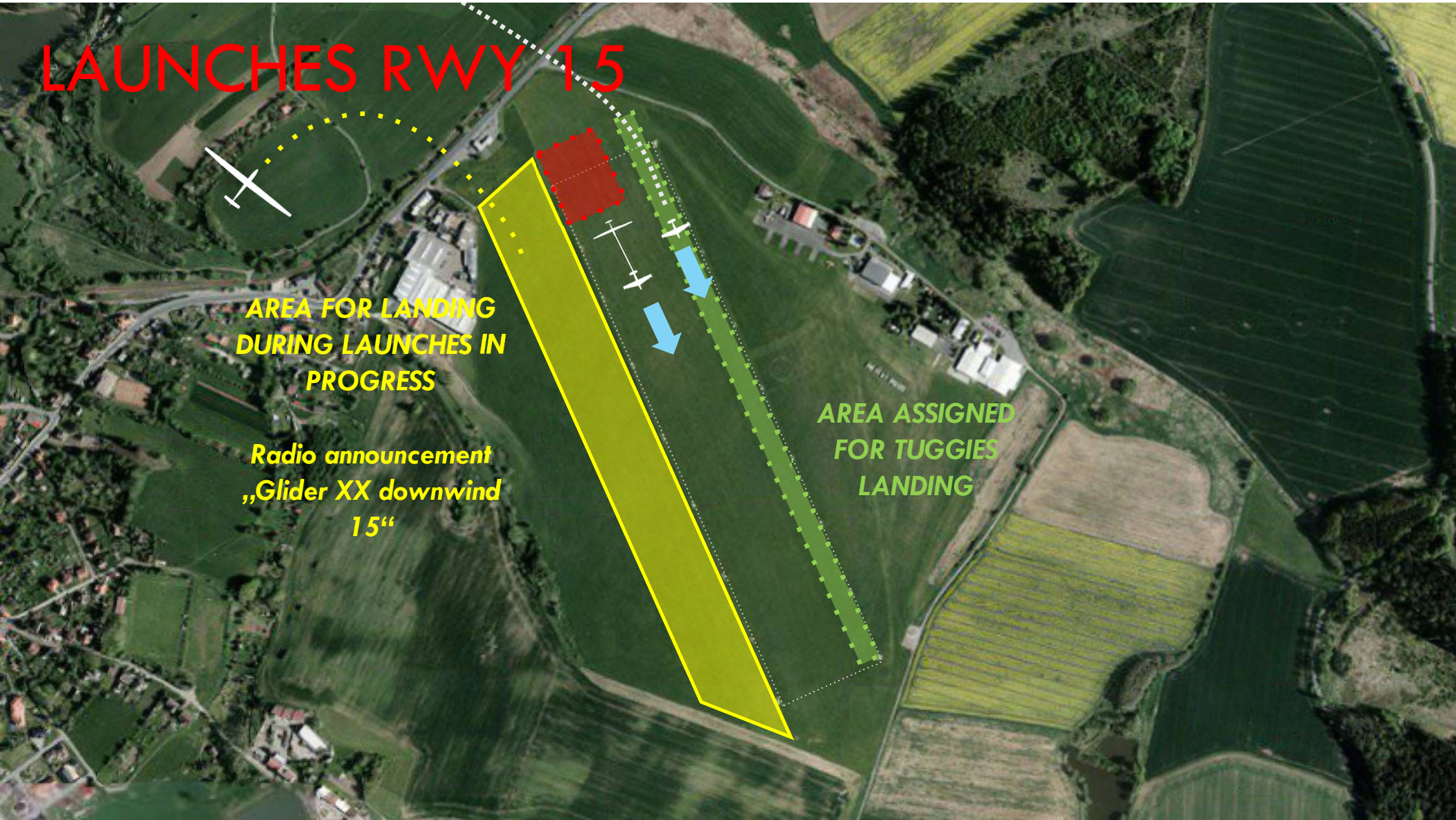


# LAUNCHES RWY 15

AREA FOR LANDING  
DURING LAUNCHES IN  
PROGRESS

Radio announcement  
„Glider XX downwind  
15“

AREA ASSIGNED  
FOR TUGGIES  
LANDING

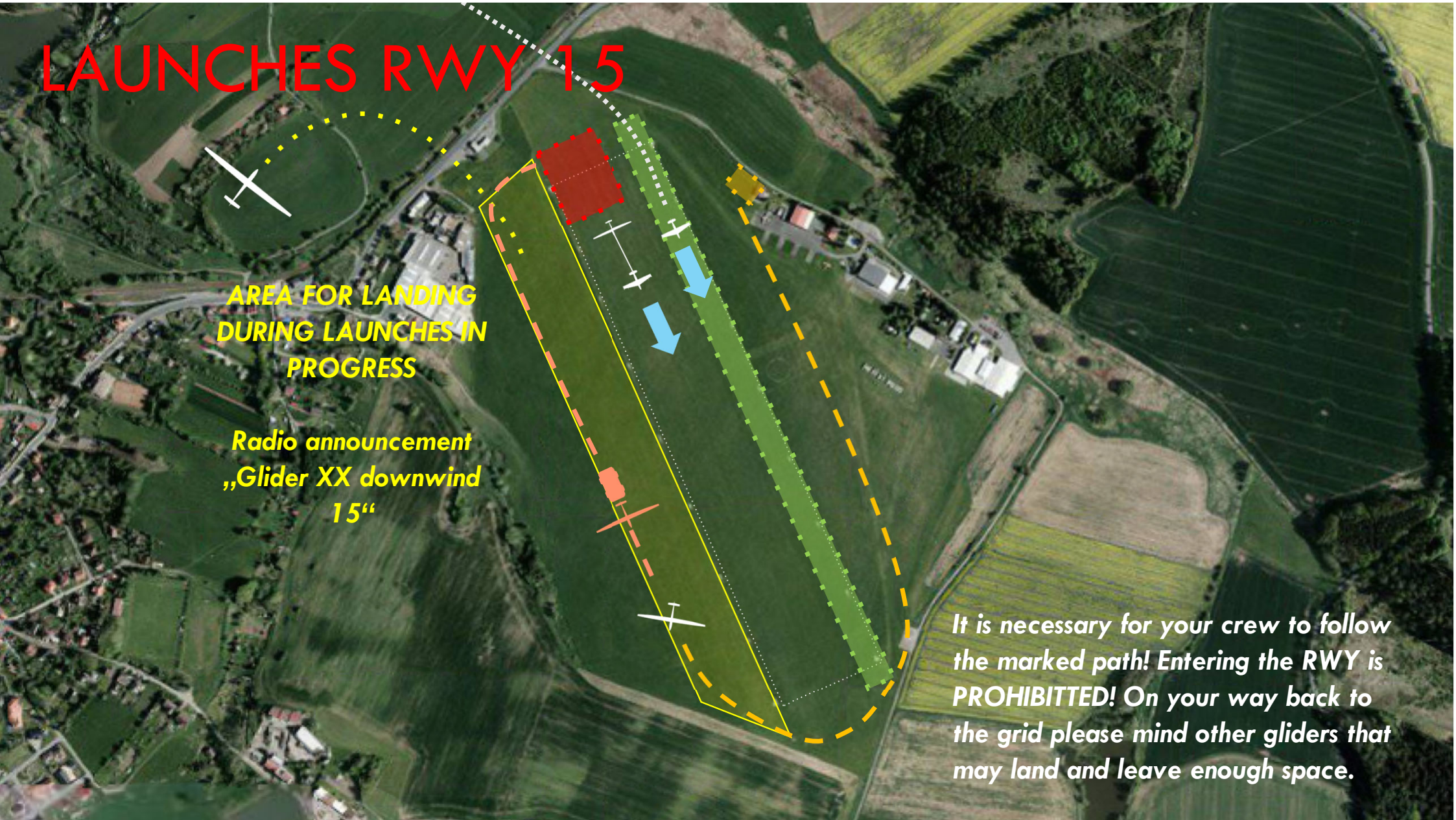


# LAUNCHES RWY 15

AREA FOR LANDING  
DURING LAUNCHES IN  
PROGRESS

Radio announcement  
„Glider XX downwind  
15“

It is necessary for your crew to follow  
the marked path! Entering the RWY is  
**PROHIBITED!** On your way back to  
the grid please mind other gliders that  
may land and leave enough space.



# RELEASE ZONE RWY 15

RELEASE HEIGHT is 1100 m MSL)

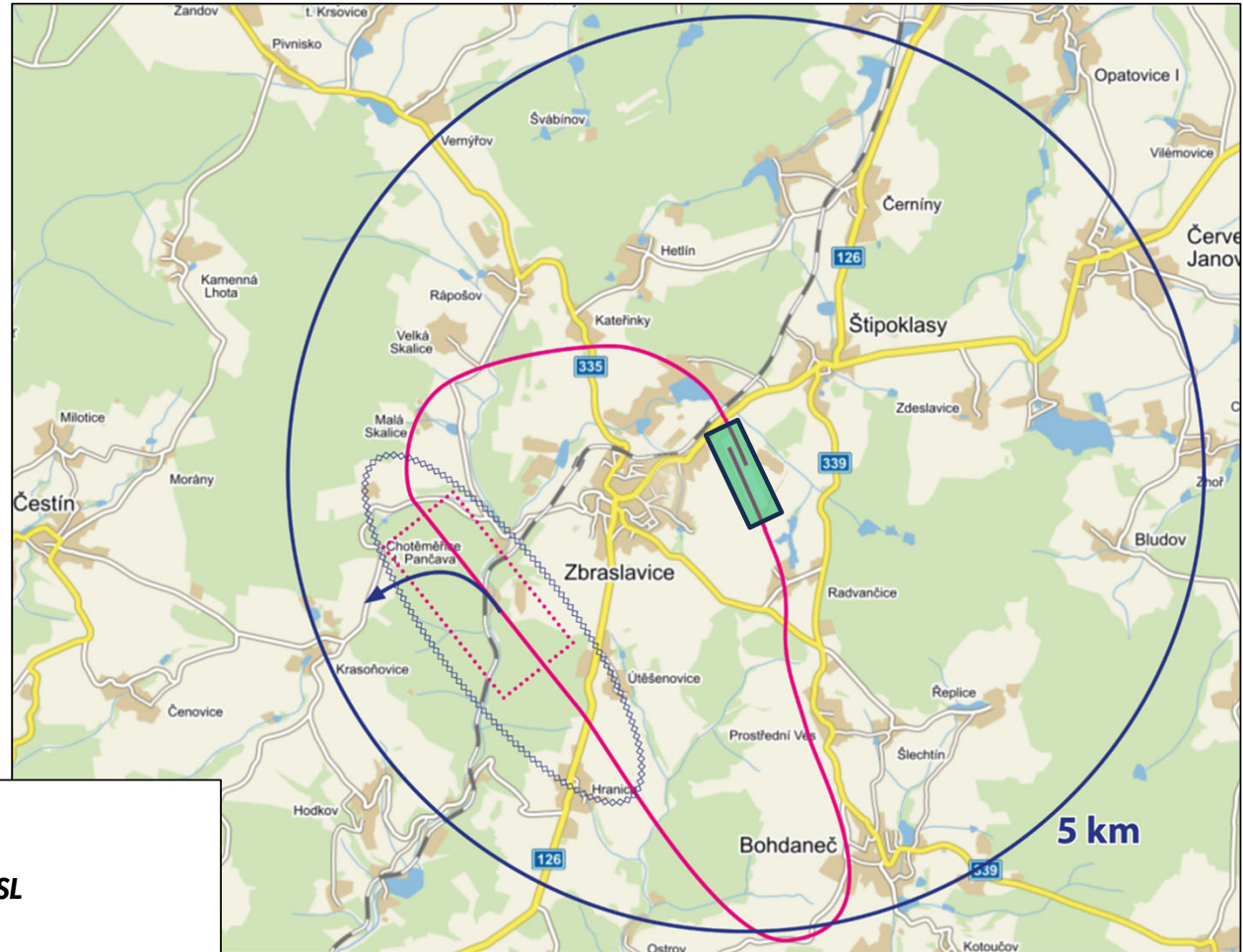
Tow plane will “rock the wings“ as a signal to release





After release tow planes will continue in a direct flight and will check if you released without any issues. Then they start with descending.

Turn LEFT and leave the release area immediately.  
Circling below 1200m MSL is prohibited in the release zone.

Motorgliders may continue in direct flight after releasing, so they can test their MoP in the assigned zone (according to the procedure mentioned in Annex A, 5.4d).

For self-launch gliders – follow the same procedure and turn off your engine within the release zone below 1150 m MSL.



-  **TOWING PATH**
-  **RELEASE ZONE**
-  **DO NOT CIRCLE BELOW 1200m MSL**
-  **ENGINE CHECK AREA**

# GRIDDING RWY 33

FREE grid order will be applied for the whole competition period.

All cars must be removed from the grid 15 minutes before the first launch.

## CLUB & 15M MIXED CLASS

– 5-6 gliders in a row

## OPEN MIXED CLASS

– 4-5 gliders in a row

*Drive in from the front! While queueing our grid crew will tell you where to go.*

*Classes will be gridded separately.  
Each class will have specific time slot for gridding announced in the morning.*

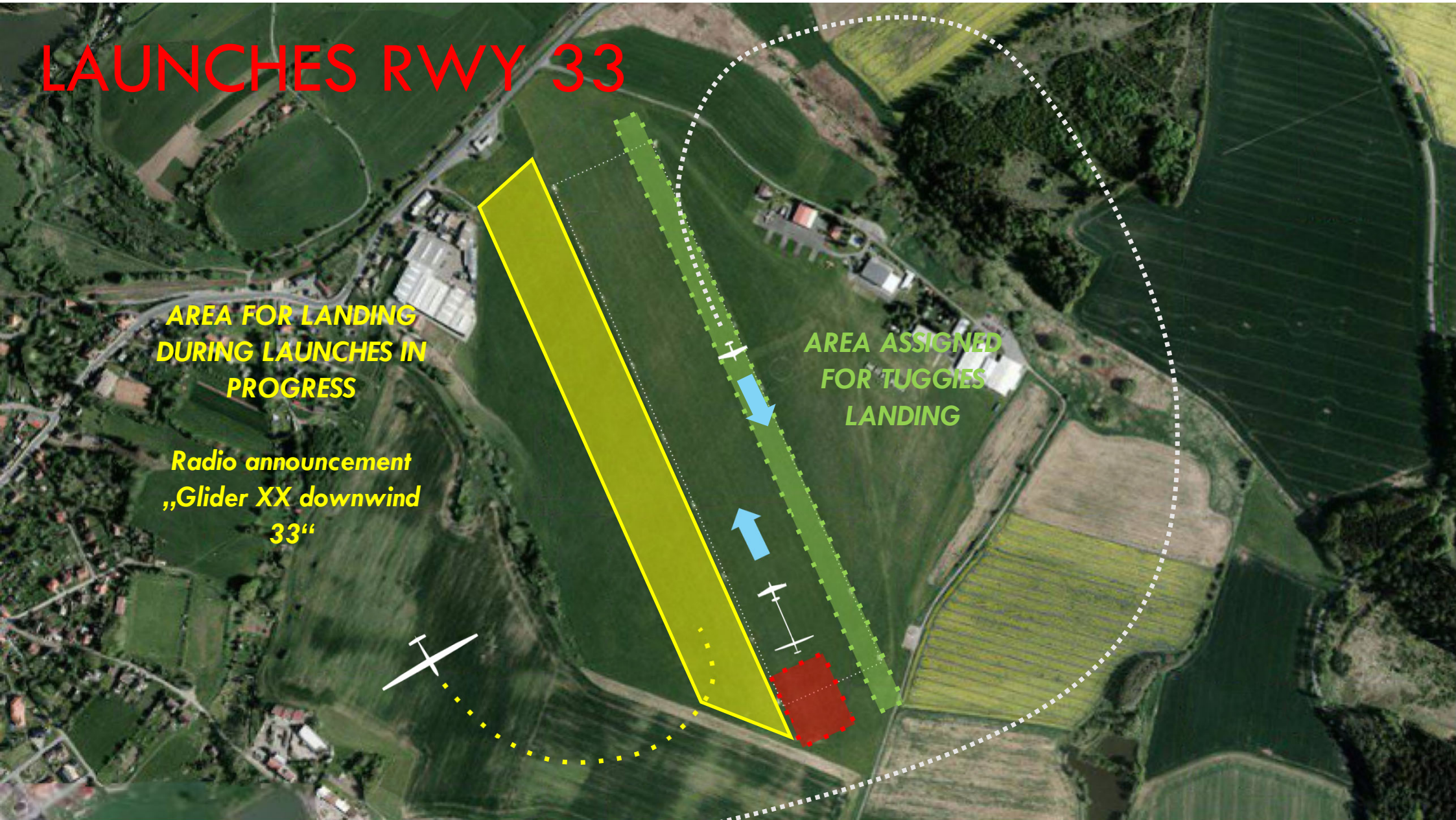


# LAUNCHES RWY 33

AREA FOR LANDING  
DURING LAUNCHES IN  
PROGRESS

Radio announcement  
„Glider XX downwind  
33“

AREA ASSIGNED  
FOR TUGGIES  
LANDING

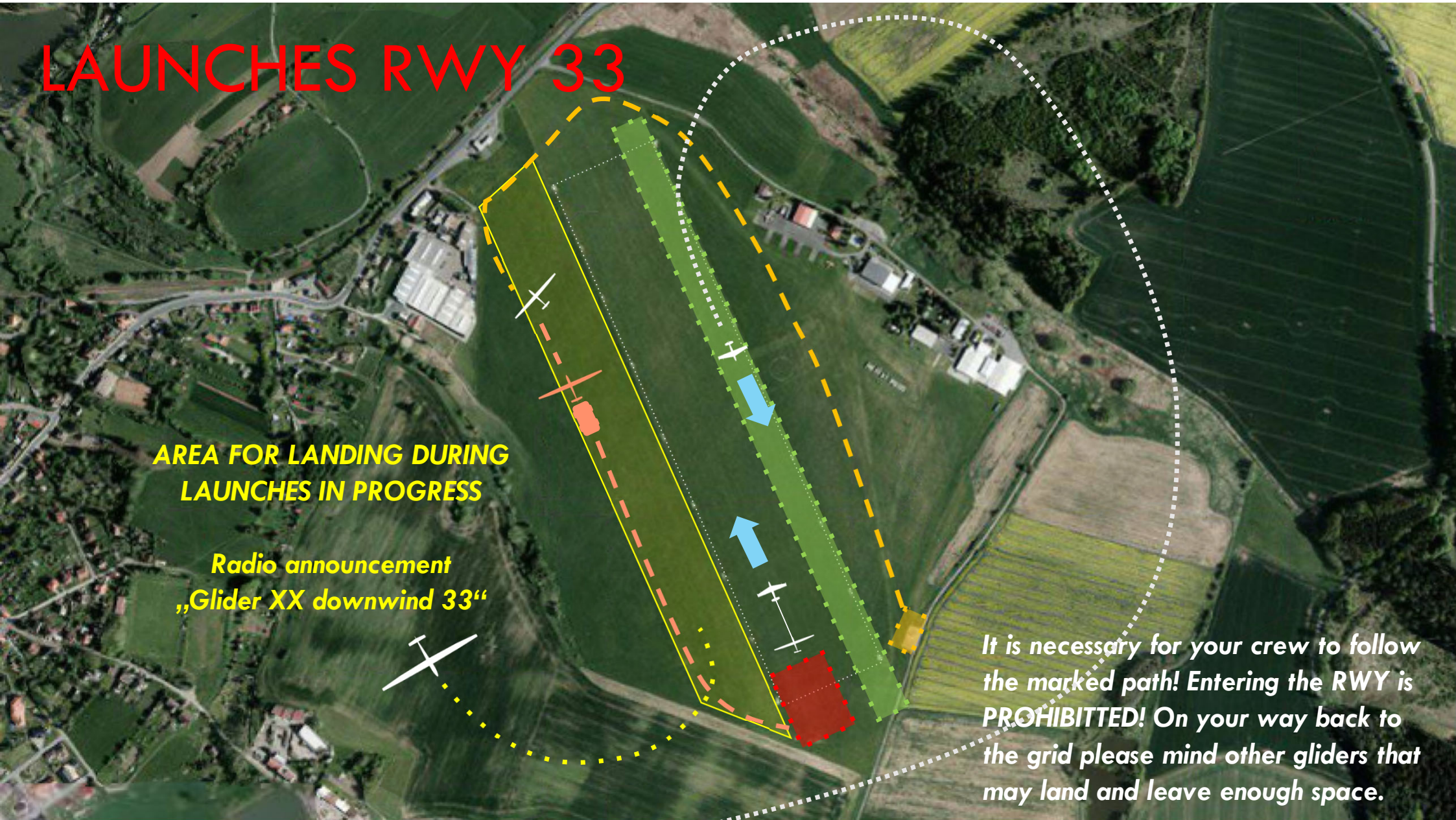


# LAUNCHES RWY 33

**AREA FOR LANDING DURING  
LAUNCHES IN PROGRESS**

**Radio announcement  
„Glider XX downwind 33“**

**It is necessary for your crew to follow  
the marked path! Entering the RWY is  
PROHIBITED! On your way back to  
the grid please mind other gliders that  
may land and leave enough space.**



# RELEASE ZONE RWY 33

- RELEASE HEIGHT is 1100 m MSL

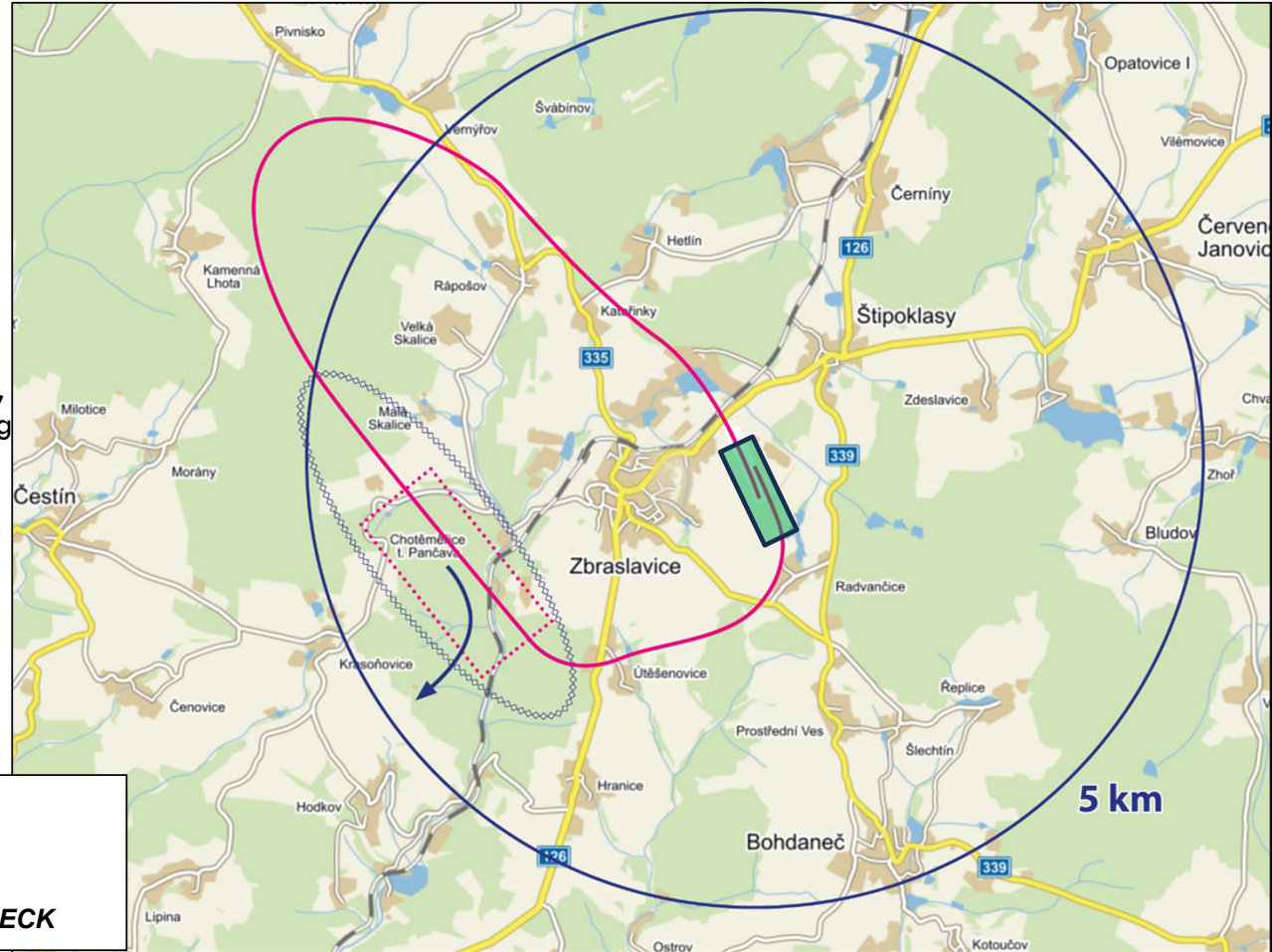
Tow plane will “rock the wings“ as a signal to release





After release tow planes will continue in a direct flight and will check if you released without any issues. Then they start with descending.

Turn RIGHT and leave the release area immediately. Circling below 1200m MSL is prohibited in the release zone.

Motorgliders may continue in direct flight after releasing, so they can test their MoP in the assigned zone (according to the procedure mentioned in Annex A, 5.4d).

For self-launch gliders – follow the same procedure and turn off your engine within the release zone below 1150 m MSL.



-  **TOWING**
-  **RELEASE ZONE**
-  **NO CIRCLING BELOW 1200 m MSL**
-  **ENGINE SHUT OFF AREA/ENGINE CHECK**

# SAFETY LANDINGS



**SUITABLE FIELDS FOR LANDING**





# ARRIVALS



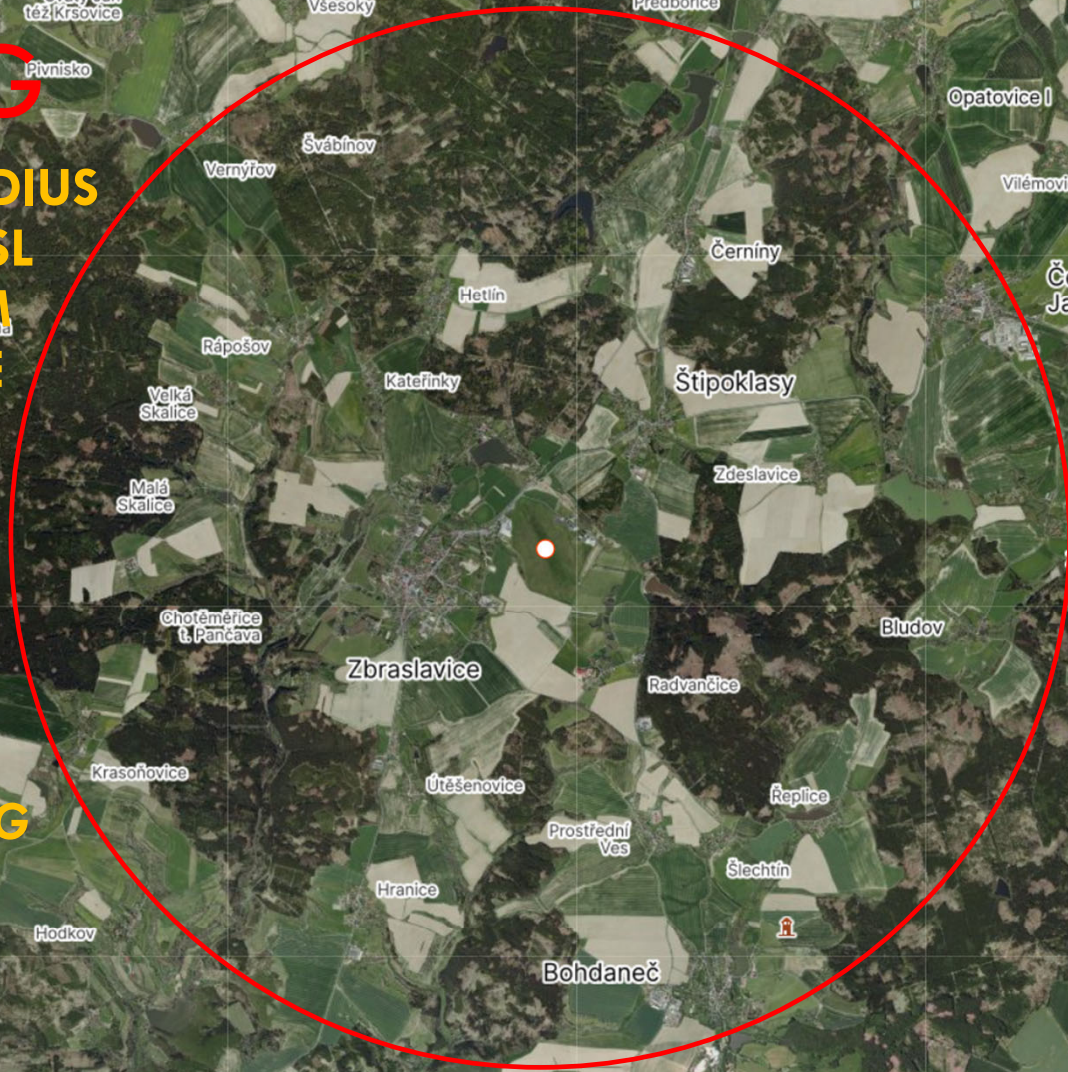
ZBRASLAVICE RADIO frequency 123,630

**„(Competition sign), (distance to finish),  
(direct landing / joining the circuit )“**

- Radio Announcement:
- 10 km to finish ring (and 5 km in case of mass landings)
- At finish ring
- On final
  
- Minimum height on the finish ring is 650 m MSL
- Continuous descend is mandatory after crossing the finish ring.
- No pull-ups, lowpasses or other dangerous maneveurs!

# FINISH RING

5 KM RADIUS  
650 M MSL  
MINIMUM  
ALTITUDE



ON ARRIVAL REPORT:  
10 KM FROM FINISH RING  
AT FINISH RING  
ON FINAL

# LANDING PROCEDURES



**No turns on the ground** – only direct landing till stopping (or small turns at the end of the RWY in case you are arriving among the first)

**Long landings!** Mind the others behind you!

**Pick up your glider immediately** (as soon as possible) after landing.

Do not enter the RWY during landings!

In case of mass landings it is possible to use a strip south from the RWY (according to next slide).

# LANDING PROCEDURES

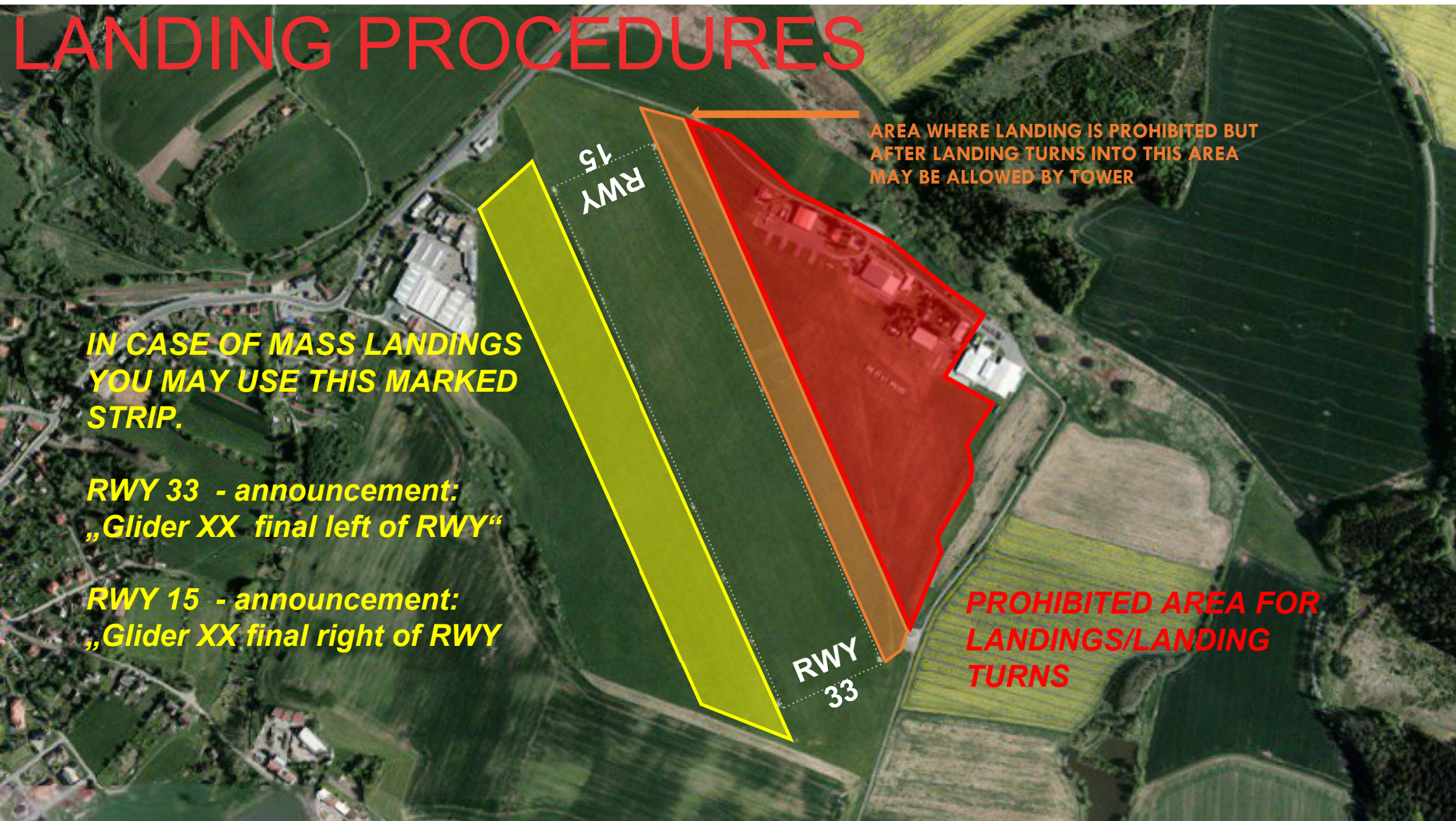
AREA WHERE LANDING IS PROHIBITED BUT  
AFTER LANDING TURNS INTO THIS AREA  
MAY BE ALLOWED BY TOWER

**IN CASE OF MASS LANDINGS  
YOU MAY USE THIS MARKED  
STRIP.**

**RWY 33 - announcement:  
„Glider XX final left of RWY“**

**RWY 15 - announcement:  
„Glider XX final right of RWY“**

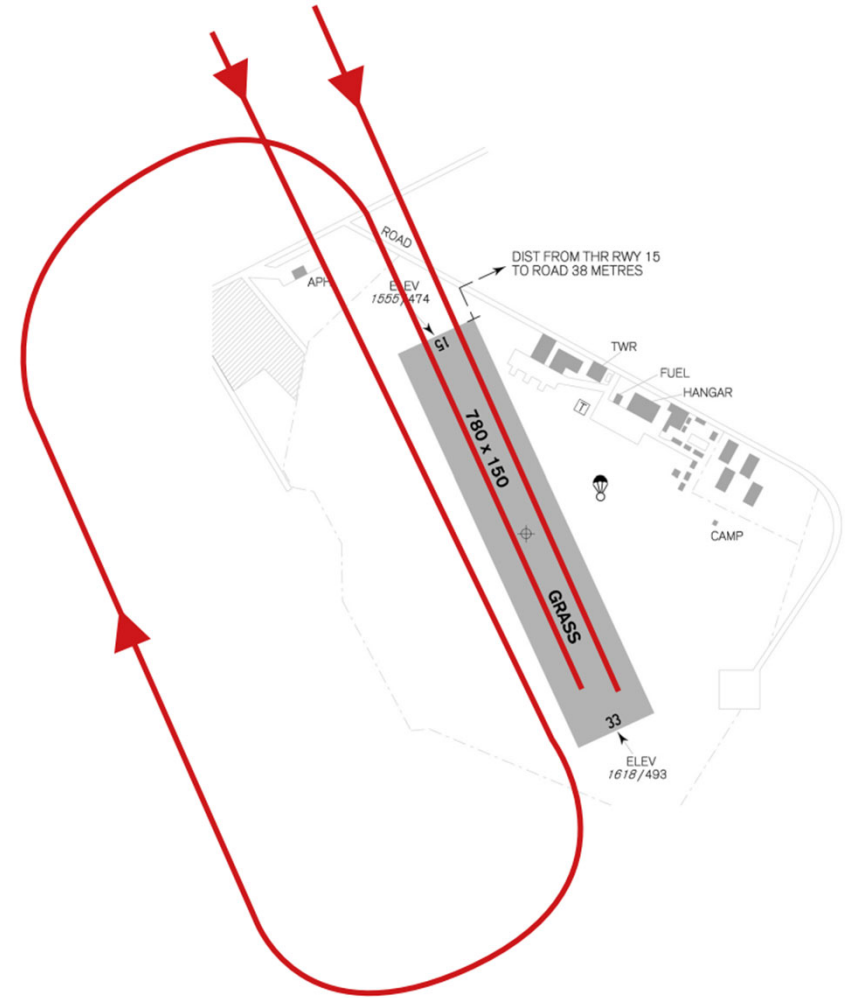
**PROHIBITED AREA FOR  
LANDINGS/LANDING  
TURNS**



# LANDING PROCEDURES RWY 15

**DIRECT LANDING or CIRCUIT**

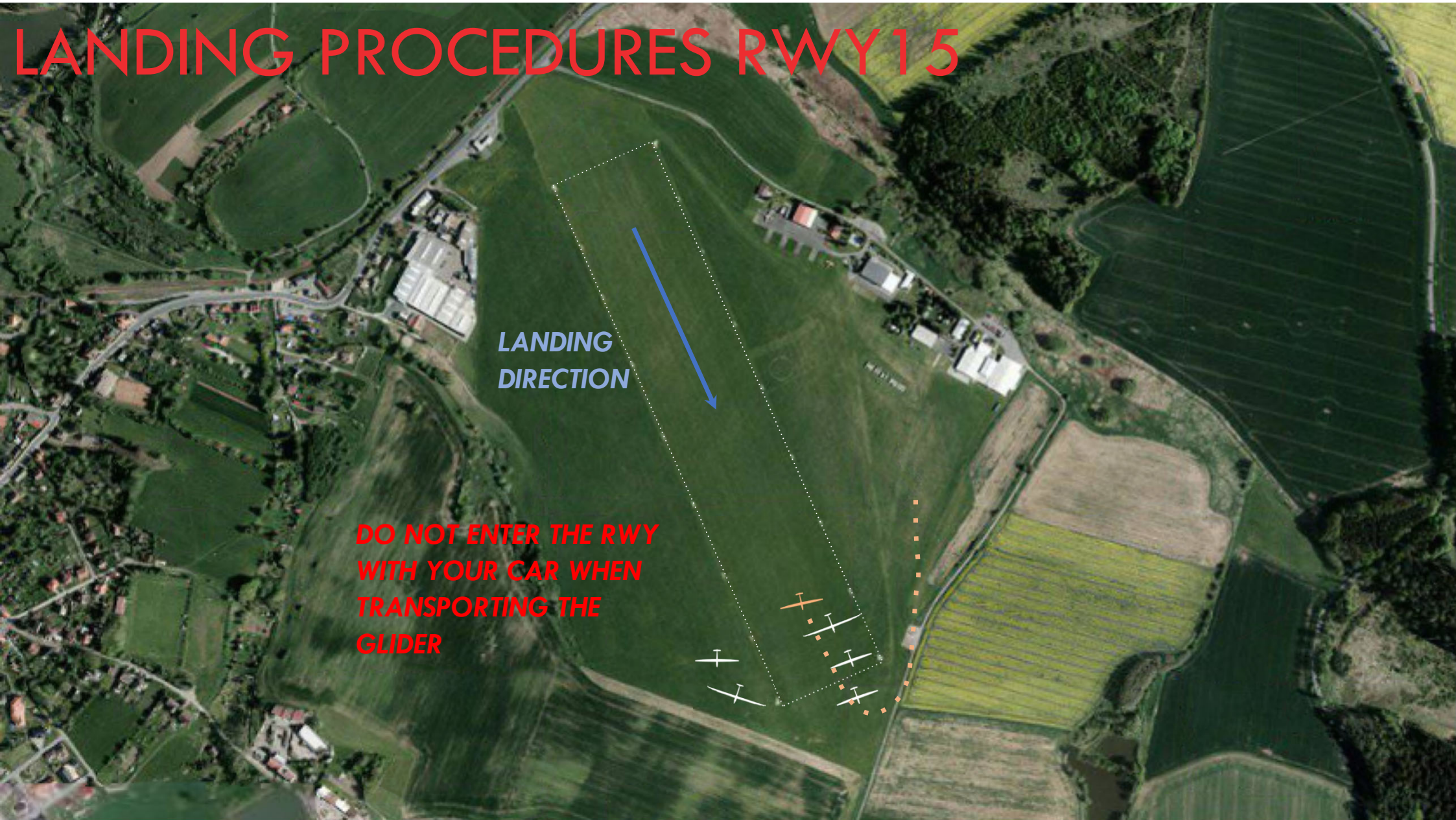
**GLIDING CIRCUIT (RIGHT) – RWY 15**



# LANDING PROCEDURES RWY 15

**LANDING  
DIRECTION**

**DO NOT ENTER THE RWY  
WITH YOUR CAR WHEN  
TRANSPORTING THE  
GLIDER**

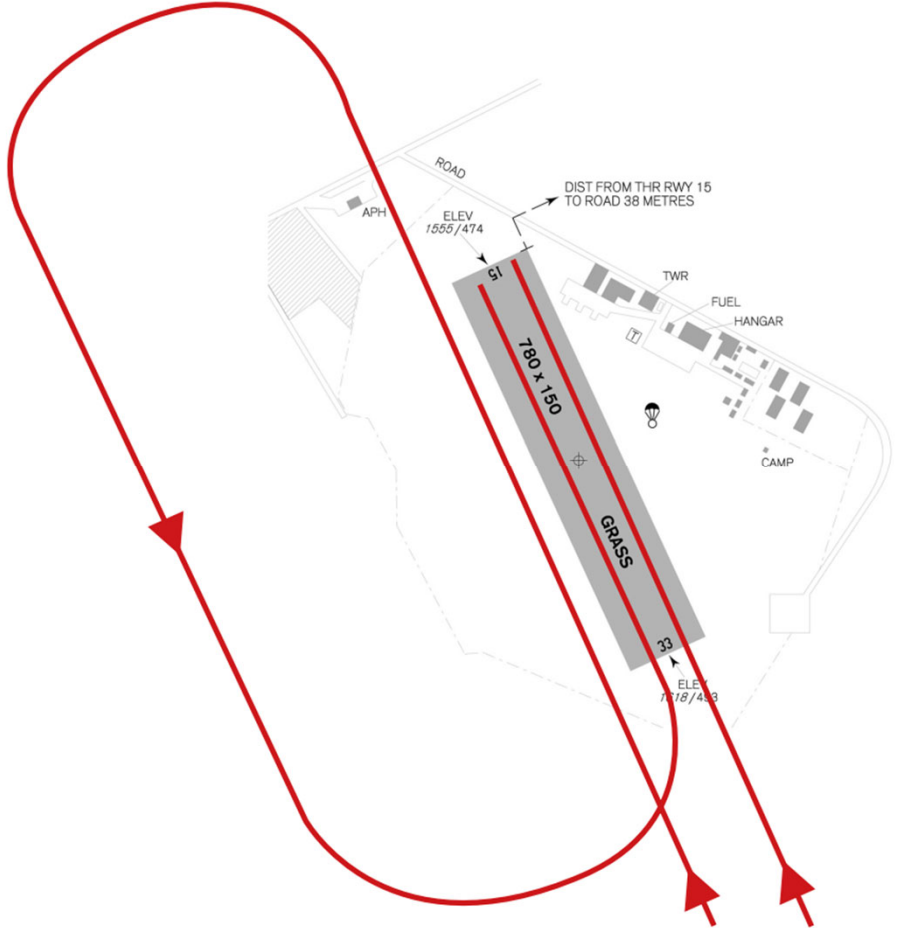


# LANDING PROCEDURES RWY33



**DIRECT LANDING OR CIRCUIT**

**GLIDING CIRCUIT (LEFT) – RWY 33**



# LANDING PROCEDURES RWY33

**DO NOT ENTER THE RWY  
WITH YOUR CAR WHEN  
TRANSPORTING THE  
GLIDER**

**LANDING DIRECTION**





# Procedure for a relight of motorgliders without the need of a landing

**(If this procedure is agreed by all the competitors at the initial briefing)**

The procedure for using the power unit for the second (or subsequent) time, without the need to land, is as follows:

The space for launching the engine for a repeated start using its own propulsion unit is a circle with a radius of 2.5 km from the turning point No. 001 SP1 Zbraslavice and the minimum height for starting the engine is 100 m AAL. After starting the engine, the glider continues to the shutdown point as in a standard launches procedure, taking care not to disturb the ongoing launches.

The pilot performing this procedure is not required to announce this process on the competition frequency. We recommend starting this entire procedure in a place from which it will be possible to land safely at the airport in the event of engine failure.

# MAIN INFO SUMMARY




- Competition frequency – Zbraslavice RADIO –**126,630**
- RWY: 15/33
- Airfield elevation: 493 m MSL
- Start line radius: 5 km (10 km total length)
- Finish ring: 5 km radius, 650 m MSL minimum finish altitude
- Contest Area Altitude Limit: **FL 95**

# OFFICIAL COMMUNICATION CHANNELS



**AZ CUP25 - Official**  
Skupina WhatsApp



**AZ CUP25 - Unofficial**  
Skupina WhatsApp





**ENJOY!**  
AZ CUP 2025 team



**AZ CUP 2025**

© 2025 Aeroklub Zbraslavice